



## Liberty Center XC Extravaganza

### Saturday, September 21, 2024

At Leaders Farm— 0-064 County Road 16 in Napoleon, Ohio - For the most accurate directions please use Google to search Leaders Farms ([www.leadersfarms.com](http://www.leadersfarms.com)) and use the directions tab. The actual address is not recognized by most GPS systems.

### Schedule of Events

8:00-9:00	Teams Preview of Course	11:45 -Varsity Black Awards
9:00 -	Varsity Girls D-I & D-II Orange Race	12:00 – Junior High Girls Race
9:45 -	Varsity Boys D-I & D-II Orange Race	12:30 – Junior High Boys Race
10:15 -	Varsity Orange Awards	1:00 – Junior High Awards
10:30 -	Varsity Girls D-III Black Race	1:30 – Elementary Race (Grade K)
11:15 -	Varsity Boys D-III Black Race	1:45 – Elementary Race (Grades 1-3)
		2:00 – Elementary Race (Grades 4-6)

**Awards:** Team trophies to Top 3 teams in high school varsity races, Top 3 in junior high races. Top 25 individuals receive medals for combined races.

**Entries:** Enter entire team roster at [www.baumspage.com](http://www.baumspage.com). The entry window will open at 8:00 AM on Friday, August 2, 2024, and will close at 8:30 PM on Wednesday, September 18, 2024. Please contact Kaleb Polman at Liberty Center Athletic Dept. – (419) 533-6404 for entry information or questions regarding the meet.

**Race Format:** This year all teams will be placed in two divisions (D1-DII combined and D-III), with the top 7 runners for each team being scored, and all other runners being displaced. There will be no Open/JV races. Junior high races will combine 7<sup>th</sup> and 8<sup>th</sup> grade boys and 7<sup>th</sup> and 8<sup>th</sup> grade girls from all divisions.

**T-Shirts:** T-shirts will be available for sale the day of the race. Cost of shirts are \$20.

**Farm Tickets:** Discounted tickets for the farm activities & ScreamAcres will be made available to all coaches, athletes, and spectators the day of the meet. They can be purchased and used later in the season.

**Concessions:** We will have bottled water, sports drinks and food at reasonable prices located in the red barn west of the entrance.

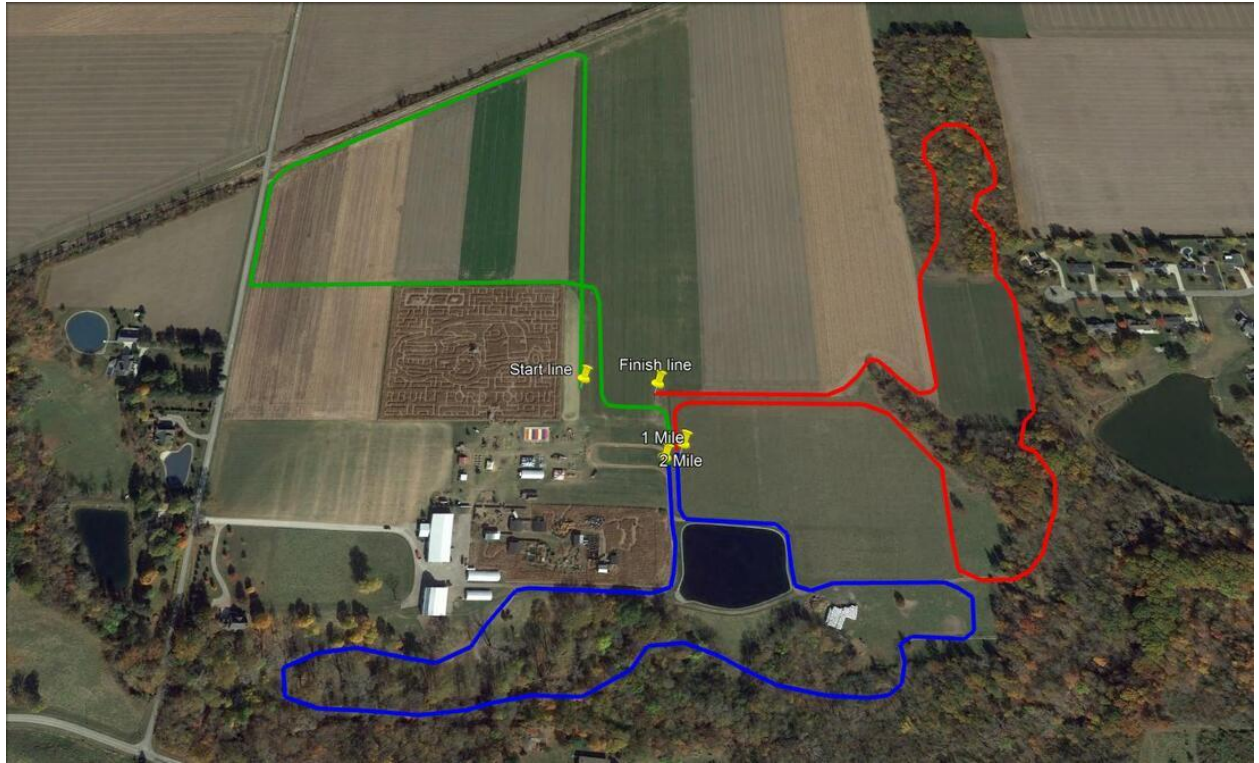
**Parking:** All teams can be dropped off at the main parking lot, and buses will be directed to bus parking lot (on site). Spectator parking is in front lot, with the first two rows reserved for handicap parking. **There will be a \$5 per person entry fee. Additionally, pets aren't allowed.**

**Team Camps:** East of the Corn Maze in the grass area near starting line (see course map).

**Race Packets:** Will be distributed to all coaches at the Finish Line area when teams arrive.

**Timing Chips:** All runners will need to turn in their chip to coaches before leaving. All schools who have athletes who fail to turn in chips will be charged \$25 per athlete.

**Elementary Race:** Athletes pay to enter Leaders Farm as there won't be an elementary registration table. Elementary runners will gather in the JH/HS starting area and then be called to the elementary start line.



HIGH SCHOOL MAP



JUNIOR HIGH MAP



ELEMENTARY MAP